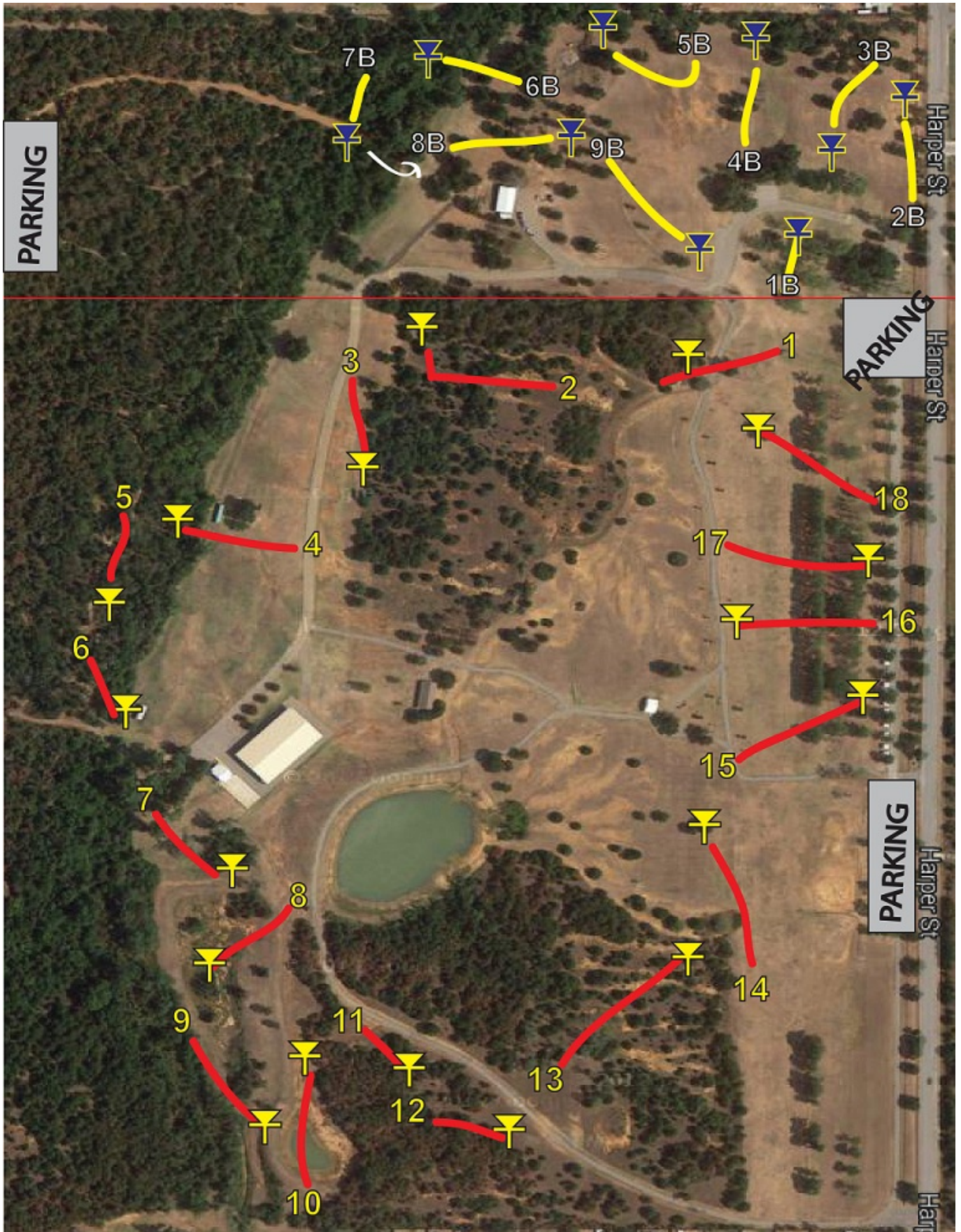


# Choctaw Creek Park

Located at 2001 N Harper Rd, between 10th street and 23rd street, Choctaw Creek Park is the largest park in Choctaw and has many recreational areas for your family to enjoy. Walking trails lead through the park passing a pond with fishing access. Horse trails are accessible from Henney Road and wind through the heavily wooded areas of the park. The playground at the front of the park has picnic tables and benches for your enjoyment.

**New in 2014**, the construction of a new Disc Golf Course added another fun outdoor recreational activity for citizens to enjoy at the park with a course that offers options of a 9, 18, or 27 hole game, with tee options that suit novice, advanced, and pro-level players.



.....

For gatherings and events, there is a large pavilion in the center of the park that is the main location for many of the festivals in the park, including [Oktoberfest](#) and the [Haunted Trails](#) at in October. This pavilion is avail-

able for rent year-round to host special events with family and friends. In addition, there are small and medium pavilions available for rent elsewhere in the park that are perfect for birthdays and fundraisers.

Choctaw Creek Park has **electricity** available at the **medium** and **large** pavilions.

There are central restrooms and port-a-pottys on site, as well as a secondary restroom by the large pavilion, accessible with rental.

If you would like to reserve one of the pavilions, please contact City Hall at 405-390-8198 for availability and prices.

Follow this link to download the [Choctaw Creek Park Pavilion Reservation Form](#).

Pavilions are not reserved until fees are paid.

If you wish to hold a special event in the park, you will also need to submit a Special Event Permit, including a letter of intent describing your event and a Certificate of Insurance. Special Event Permits must be approved by Council and need to be submitted no later than the Wednesday before the City Council meeting, which are held on the first and third Tuesday of each month.

***Make sure you apply early enough to have time for approval prior to your event.***

Follow this link to download the [Special Event Permit](#).



The small pavilion at Choctaw Creek Park



The medium pavilion at Choctaw Creek Park



The large pavilion at Choctaw Creek park