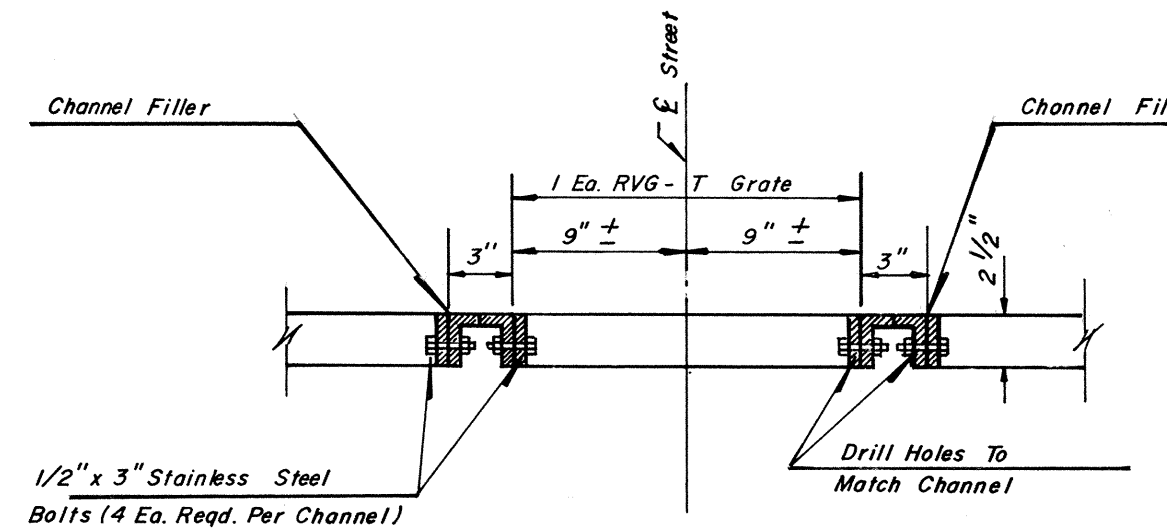
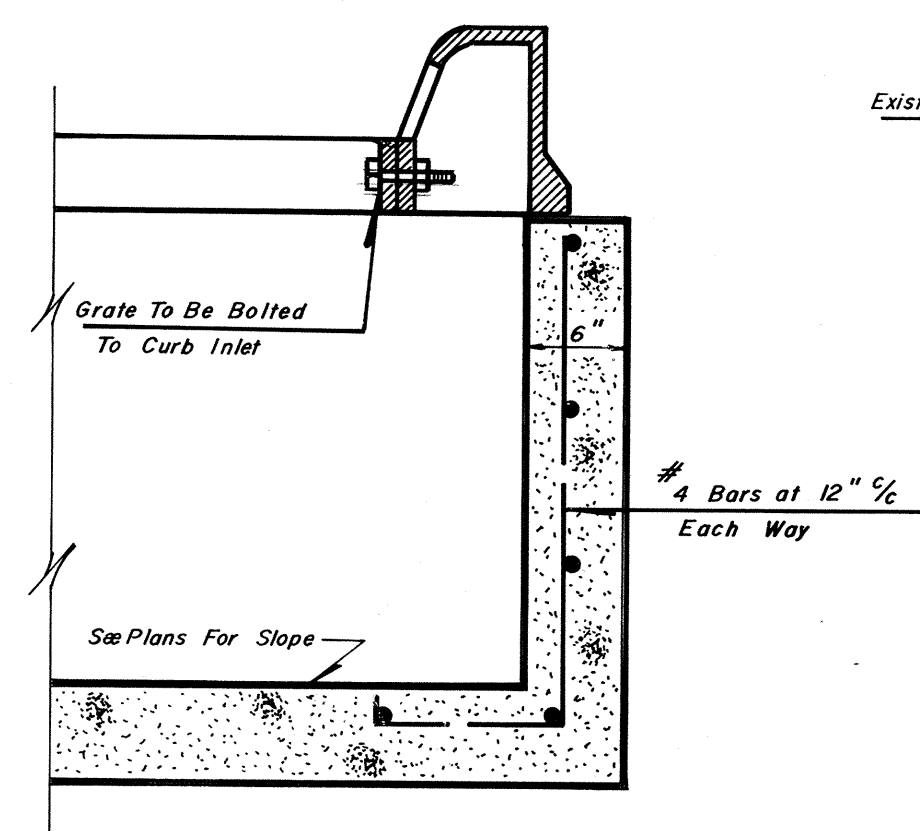
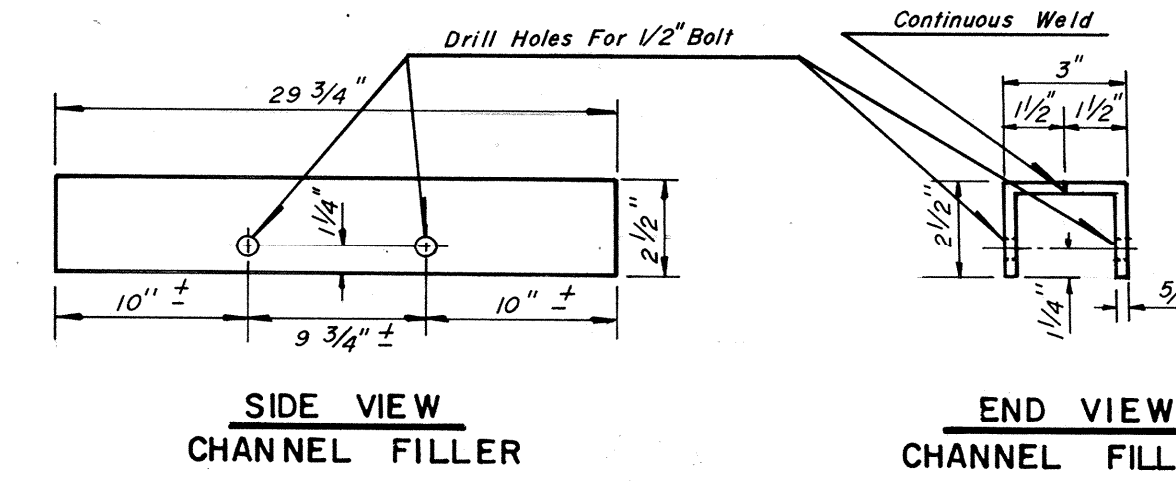


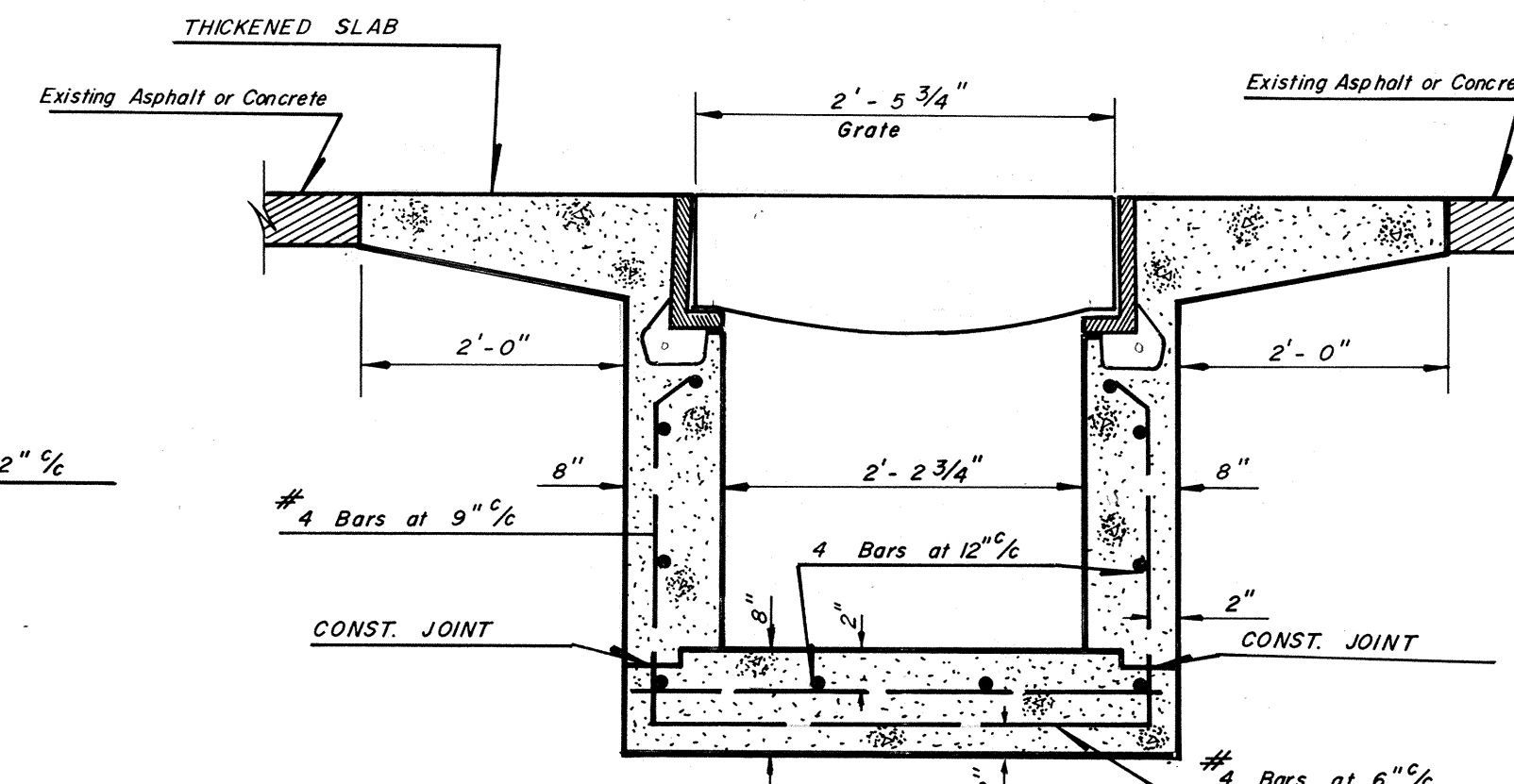
PLAN VIEW OF SPECIAL GRATED STREET INLET  
 (STANDARD CAST INLET GRATE)



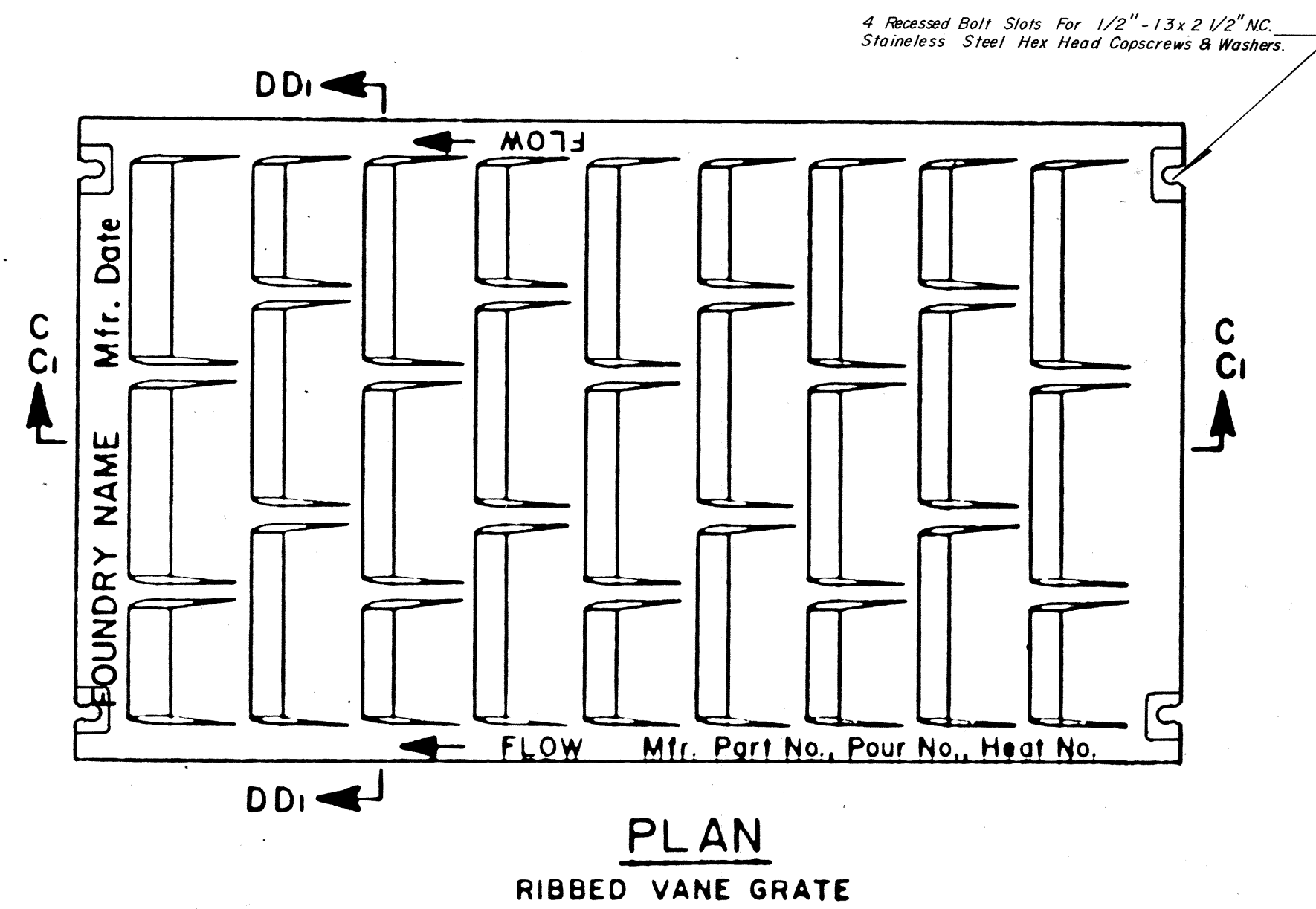
SECTION C-C



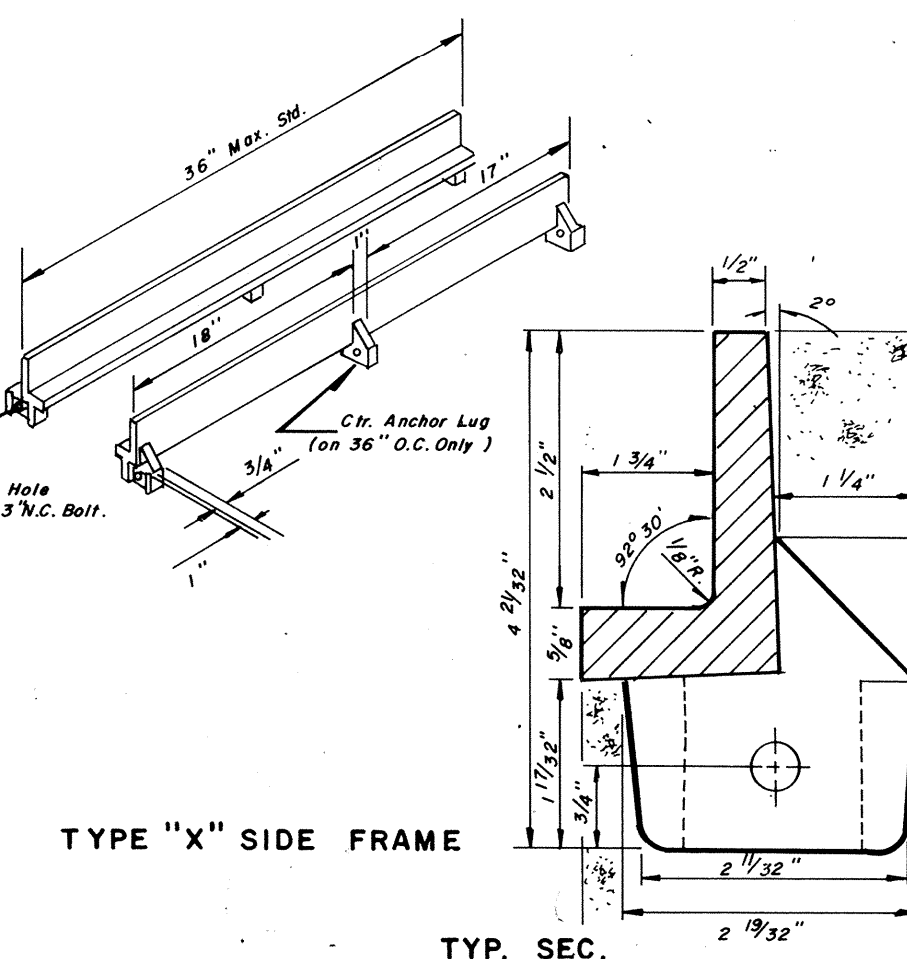
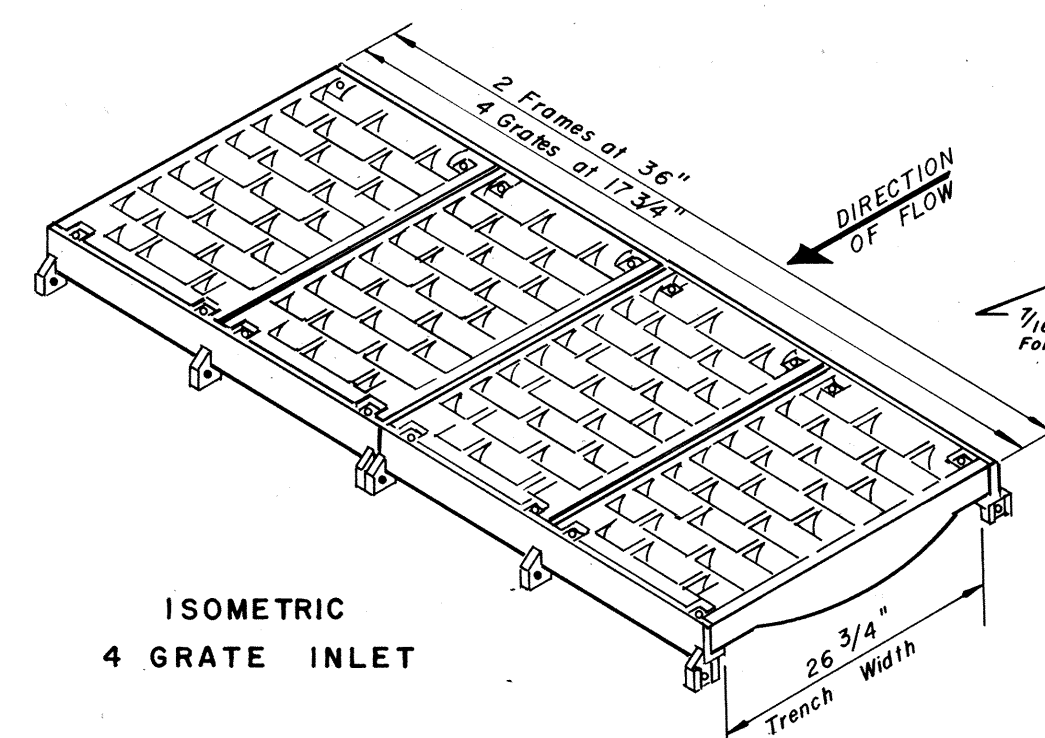
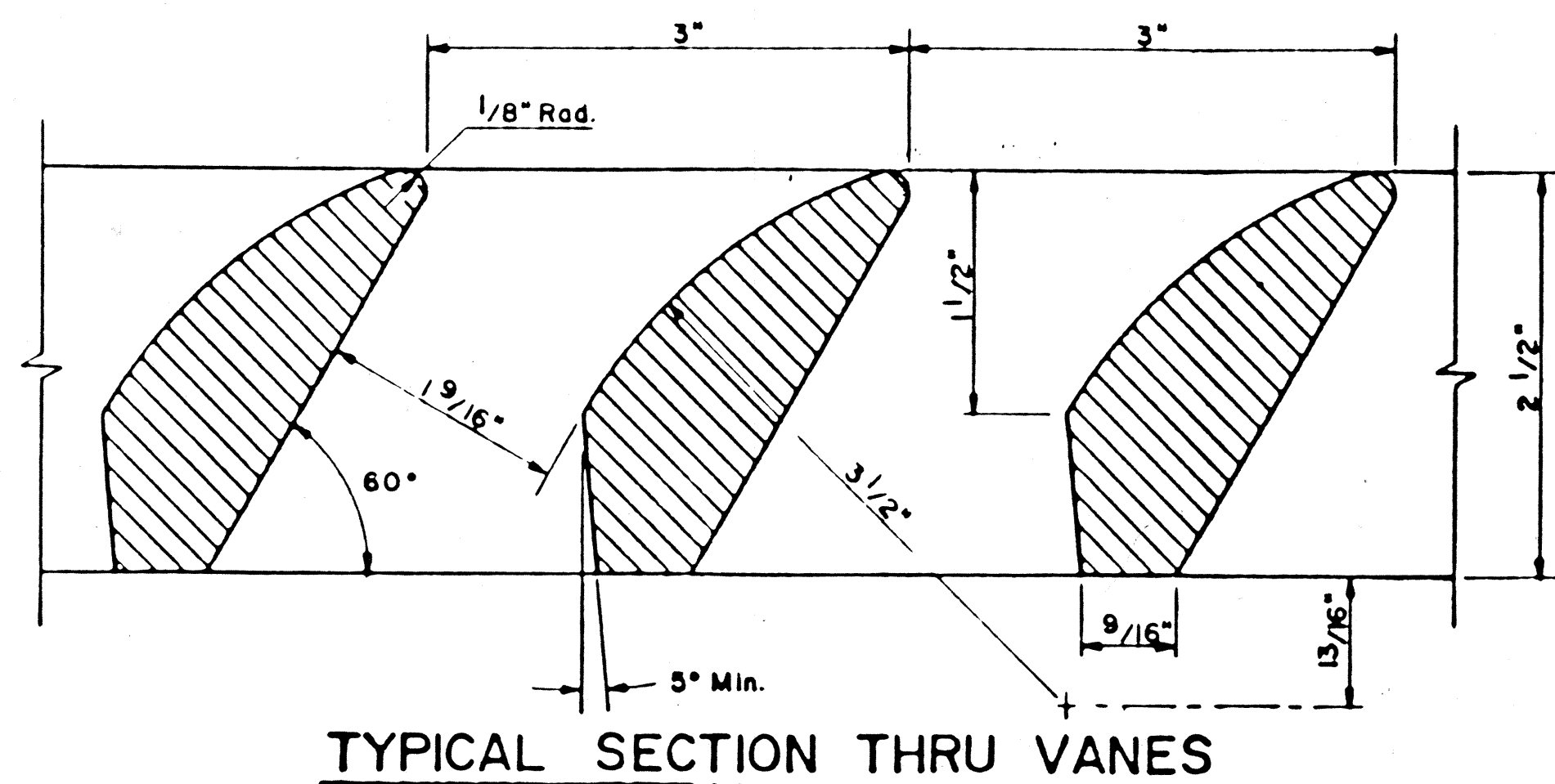
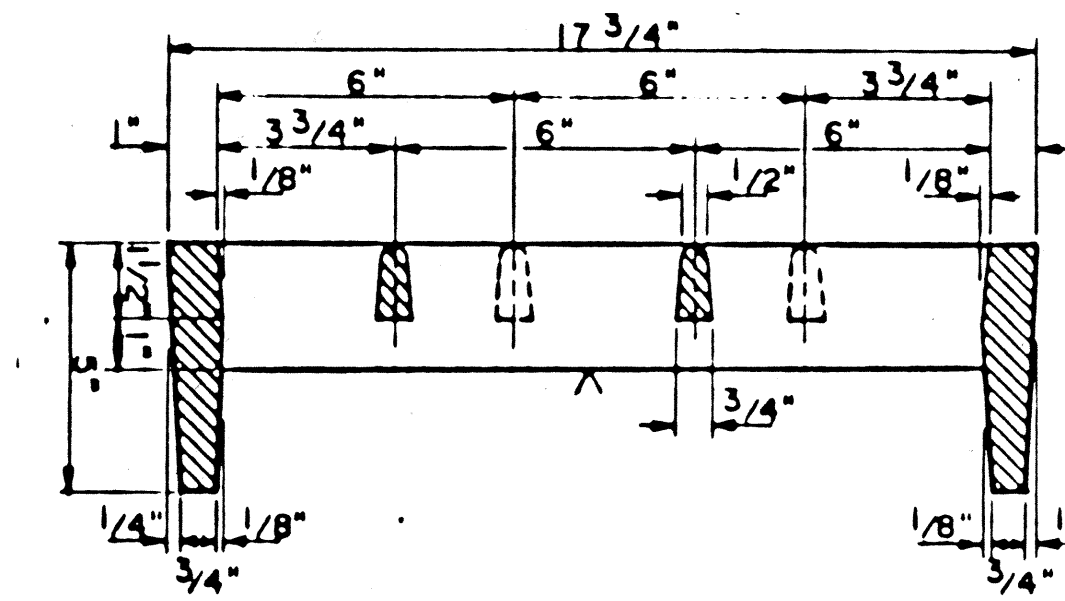
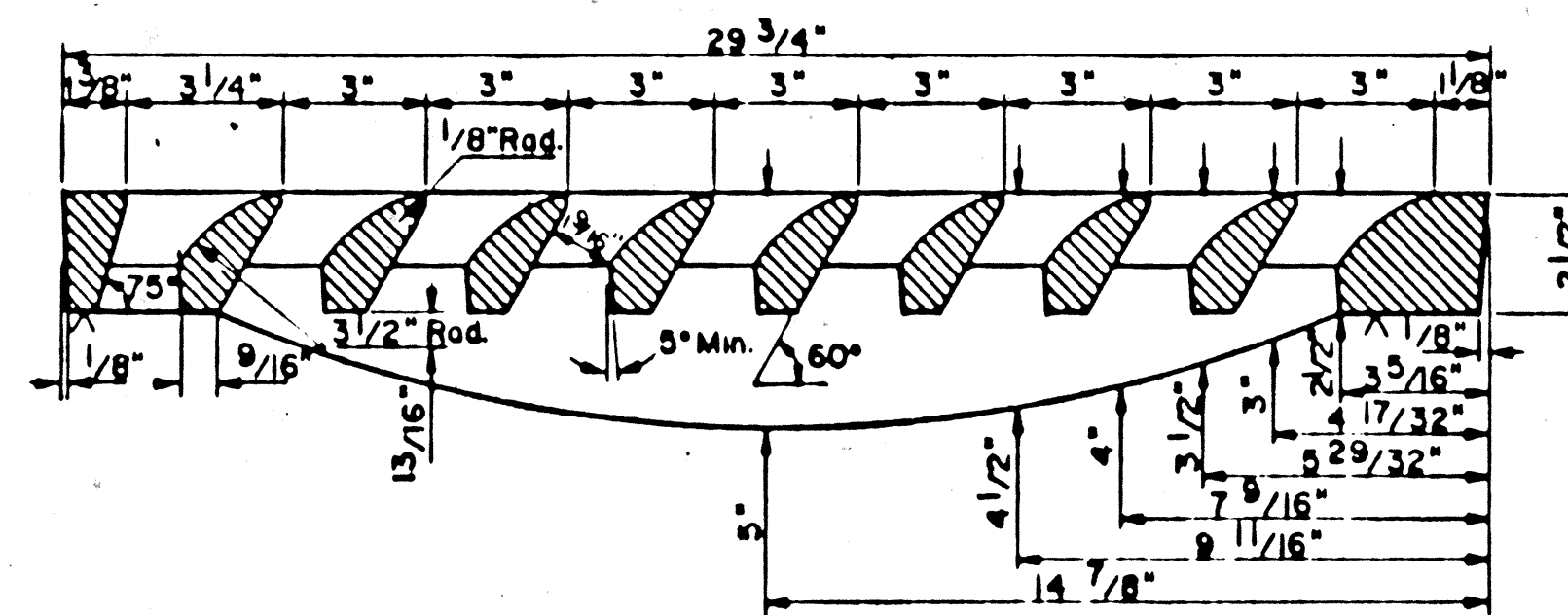
SECTION A-A



SECTION B-B



TYPE RVG-T (TRENCH INSTALLATION)



PAVING AND DRAINAGE MAINTENANCE BOND:

FIRST YEAR	- 100% OF CONSTRUCTION COST
SECOND YEAR	- 80% OF CONSTRUCTION COST
THIRD YEAR	- 75% OF CONSTRUCTION COST
FOURTH YEAR	- 50% OF CONSTRUCTION COST
FIFTH YEAR	- 25% OF CONSTRUCTION COST

TYPE RVG-T RIBBED VANE GRATE TRENCH TYPE

GENERAL NOTES

- ALL CONSTRUCTION AND MATERIALS REQUIREMENTS SHALL BE IN ACCORDANCE WITH THE CURRENT SPECIFICATIONS.
- FRAME TYPE GRATES, VANE OR RIBBED VANE, ARE NOT TO BE USED IN TRENCH INSTALLATIONS.
- GRATES SHALL BE INSTALLED IN FRAME WITH FLOW ARROW POINTING DOWNSTREAM OR TOWARD THE LOW POINT IN A SUMP.
- ALL LETTERING TO BE RECESSED 1/16". INFORMATION REQUIRED SHALL BE SUFFICIENT FOR IDENTIFICATION AS SHOWN.
- GRATES SHALL BE CAST STEEL, DUCTILE IRON, OR GRAY IRON CONFORMING TO SECTION 725 OF THE CURRENT SPECIFICATIONS.

APPROVED *Gene W. Sayers*  
 Gene W. Sayers  
 City Engineer

9-3-85  
 ORDINANCE No. 291

DESIGN STANDARD DETAILS  
 CITY OF CHOCTAW OKLAHOMA  
**SPECIAL GRATED STREET INLET  
 RIBBED VANE GRATE TYPE  
 FOR TRENCH INSTALLATION**