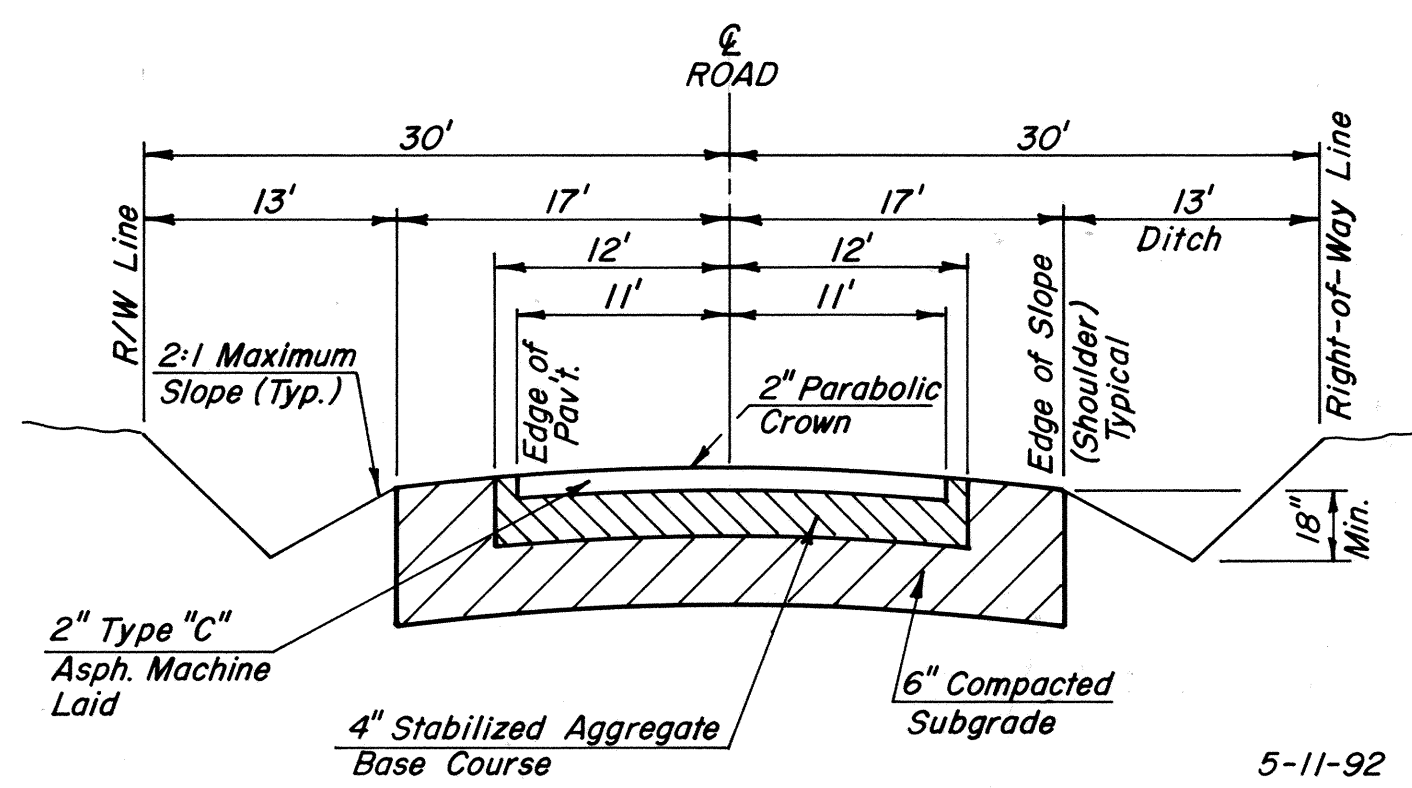


**-ALTERNATE-
MOUNTABLE CURB DETAIL**

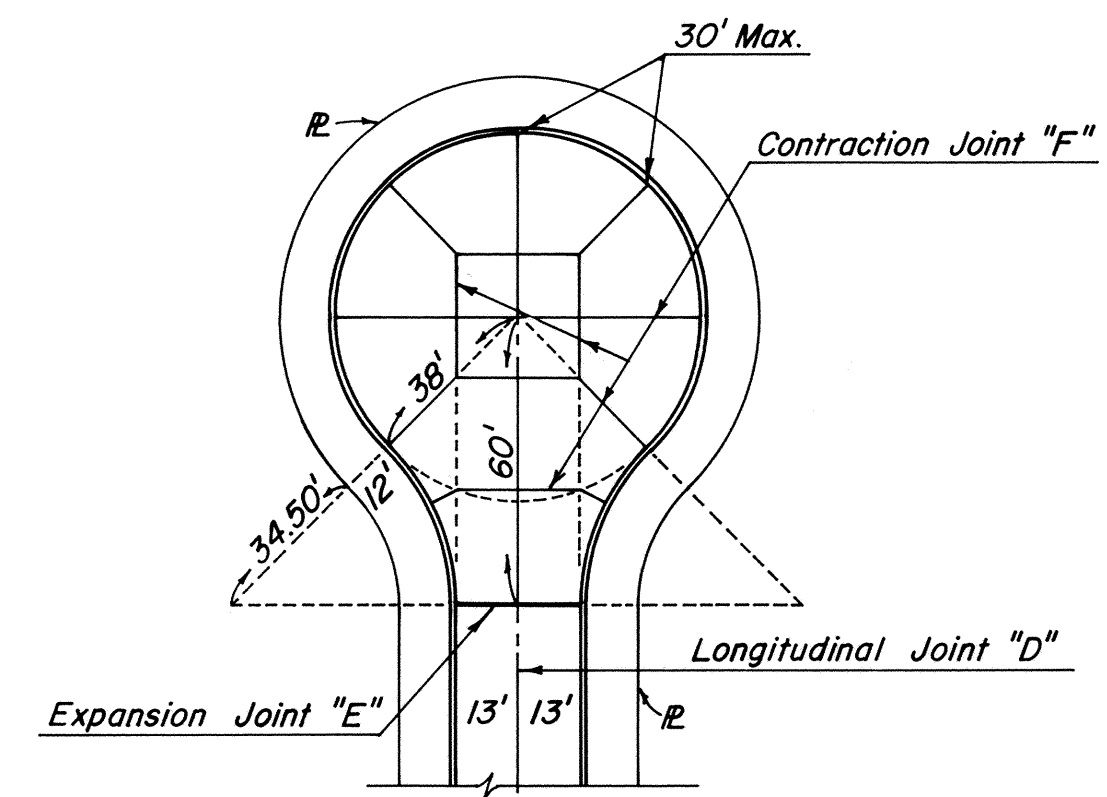
(LOCAL STREET ONLY)
NOTE: May Be Used With Prior
Approval of Engineer.



TYPICAL SECTION

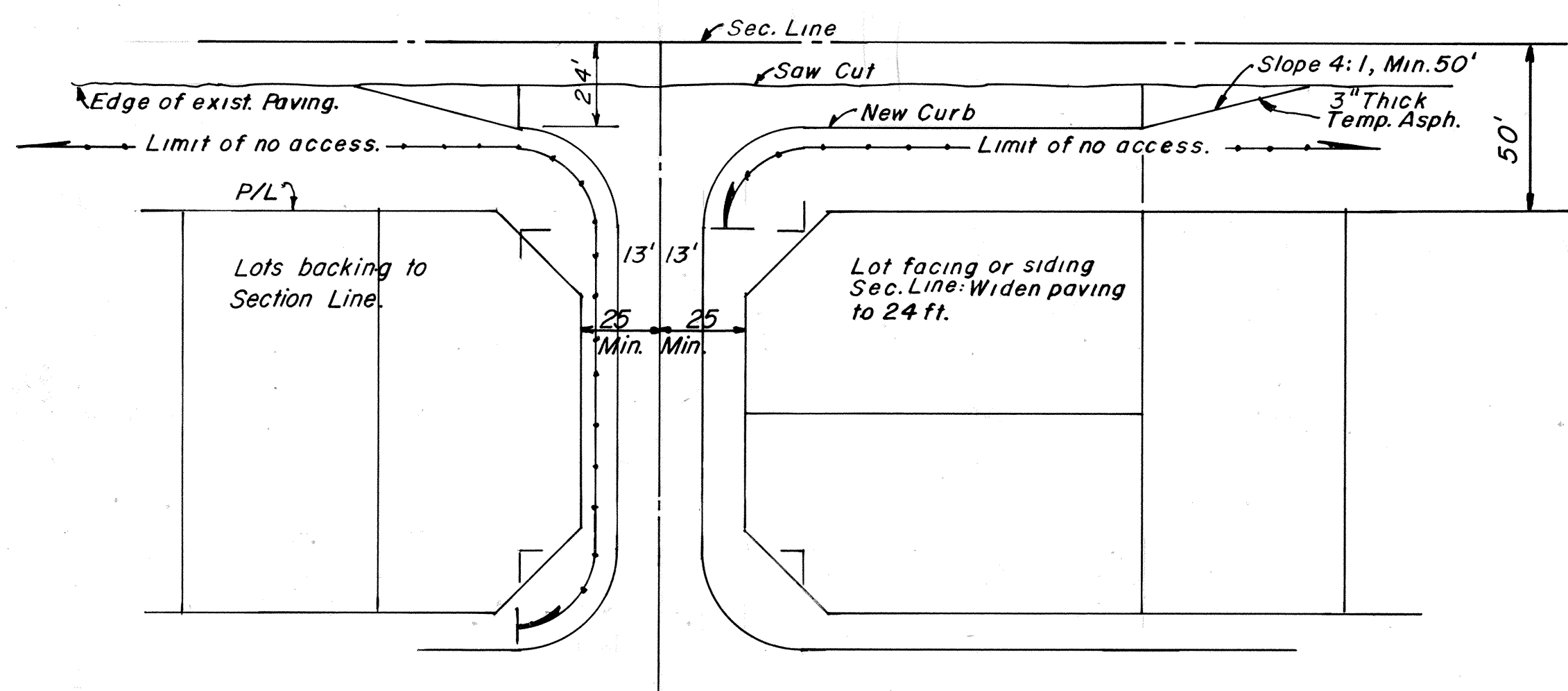
PRIVATE ROAD SUBDIVISION PAVEMENT

NOTE: All Courses Shall Be Compacted To 95% Standard
Proctor Density. Compaction Tests Must Be
Furnished To City.



STANDARD CUL-DE-SAC, 38'R.

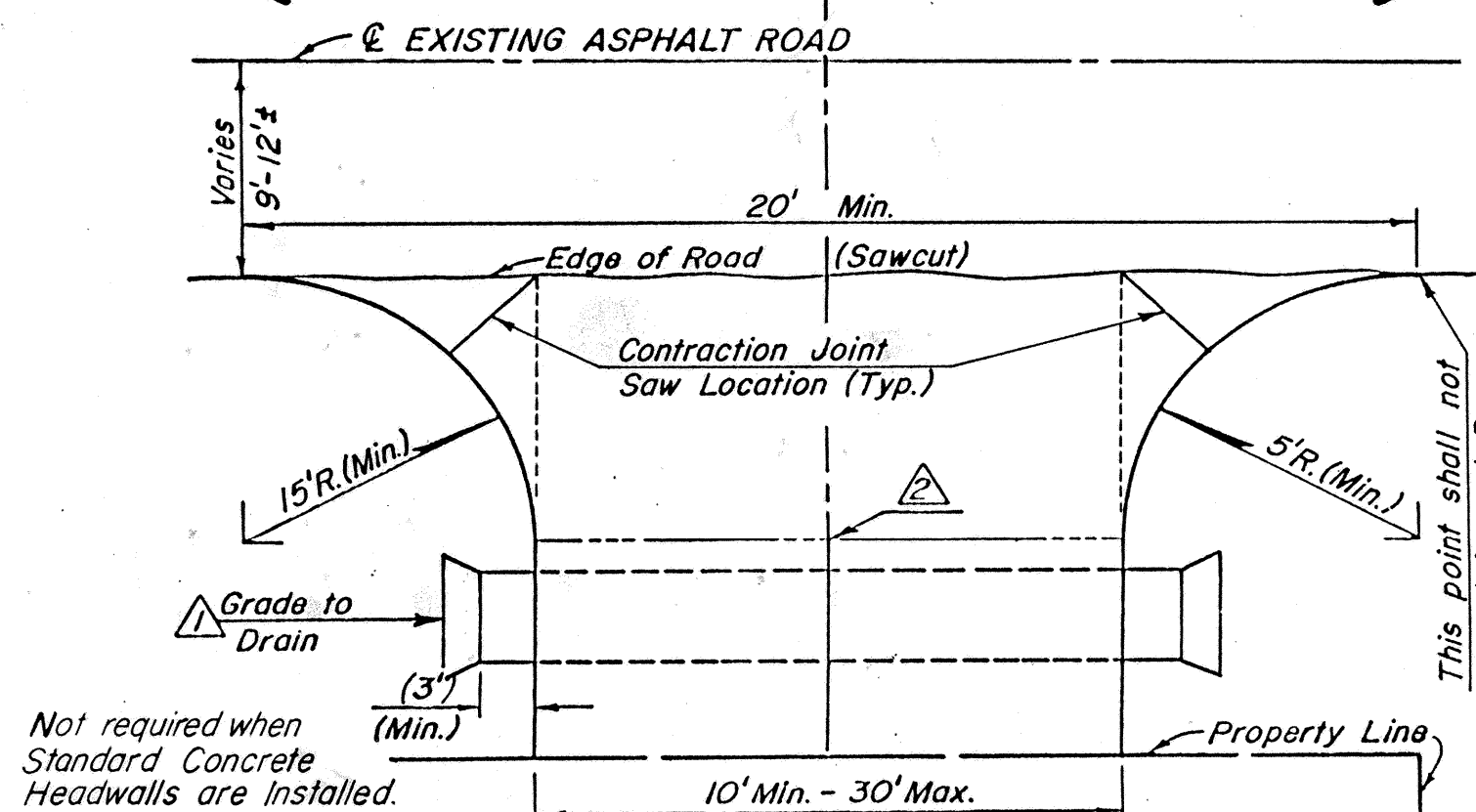
(For Joint Construction Details See Std. P-1)



SECTION LINE WIDENING

COMMERCIAL & RESIDENTIAL DRIVES-NO CURBS

DIMENSIONED FOR COMMERCIAL DIMENSIONED FOR RESIDENTIAL



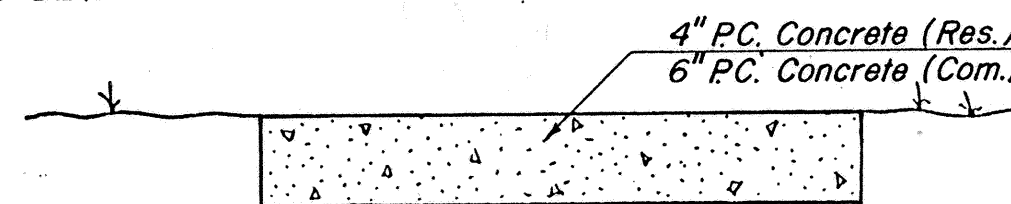
A properly sized culvert, Concrete or Galv. Steel Pipe shall be installed where a drainage ditch exists, Min. Dia. 18". Culvert to be omitted only with prior approval of the City Engineer or the City Director of Public Works. O.D.O.T. Standard Headwall or Prefabricated Culvert End Section are required for Commercial drives.

This point to be a minimum of 3" above the edge of the existing road.

NOTE: This Driveway Detail is approved for use where curbs are not existing along the street.

All Maintenance to be by the Property Owner.

THIS DETAIL DOES NOT APPLY TO INDUSTRIAL DRIVES.

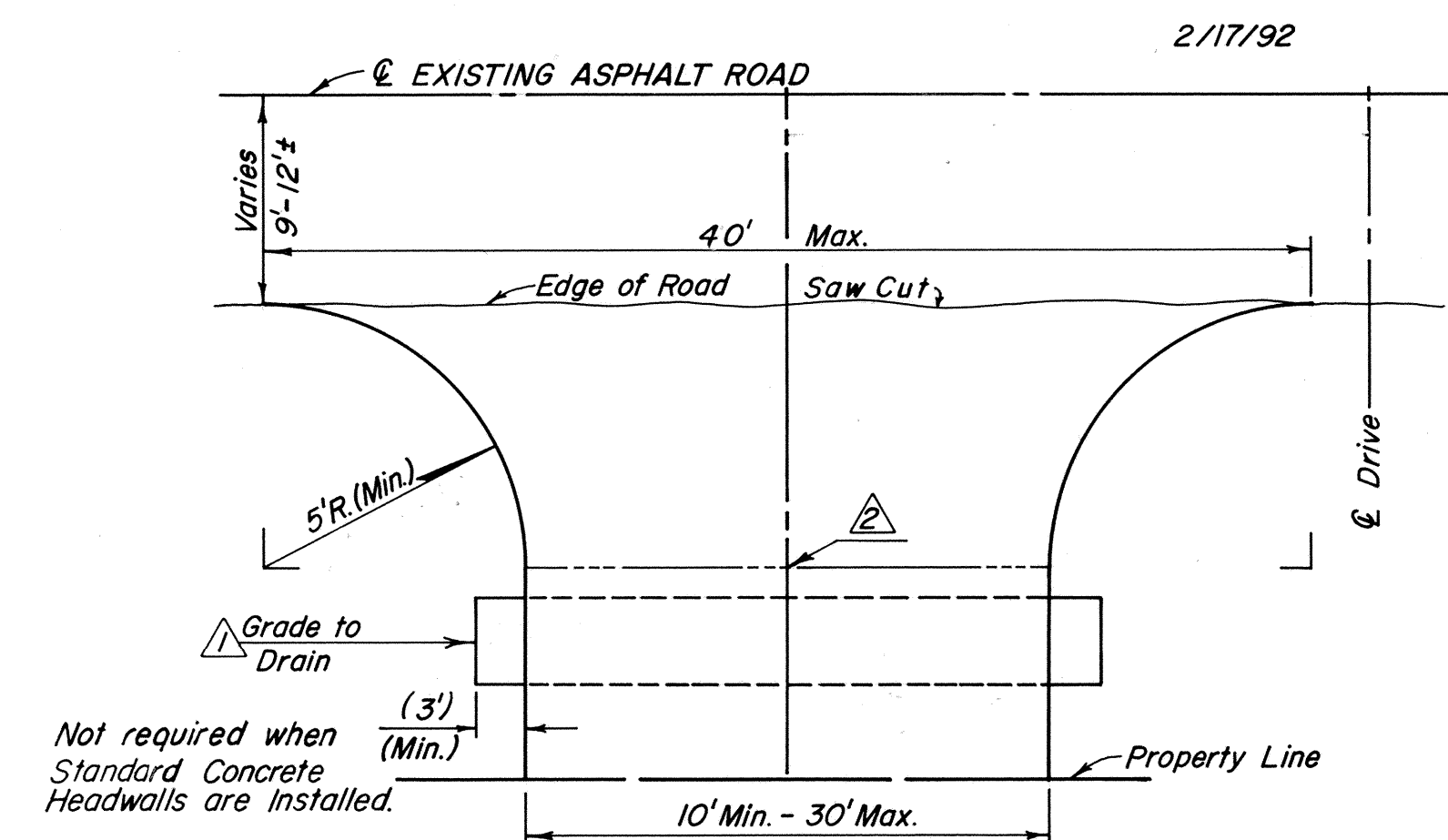


TYPICAL SECTION

NOT FOR USE ON ANY STATE HWY.

PAVING AND DRAINAGE MAINTENANCE BOND:

FIRST YEAR	- 100% OF CONSTRUCTION COST
SECOND YEAR	- 80% OF CONSTRUCTION COST
THIRD YEAR	- 75% OF CONSTRUCTION COST
FOURTH YEAR	- 50% OF CONSTRUCTION COST
FIFTH YEAR	- 25% OF CONSTRUCTION COST



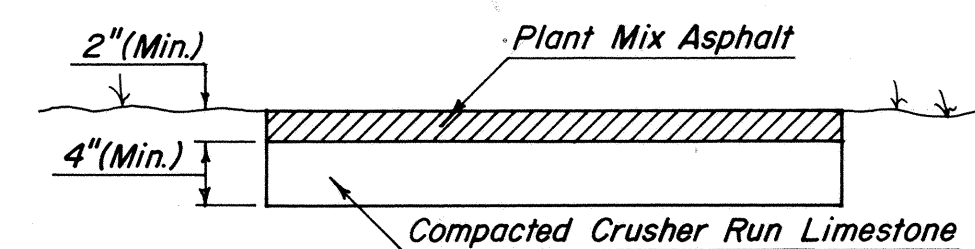
A properly sized culvert, Concrete or Galv. Steel Pipe shall be installed where a drainage ditch exists, Min. Dia. 18". Culvert to be omitted only with prior approval of the City Engineer or the City Director of Public Works.

This point to be a minimum of 3" above the edge of the existing road.

NOTE: This Driveway Detail is approved for use where curbs are not existing along the street.

All Maintenance to be by the Property Owner.

THIS DETAIL DOES NOT APPLY TO INDUSTRIAL DRIVES.

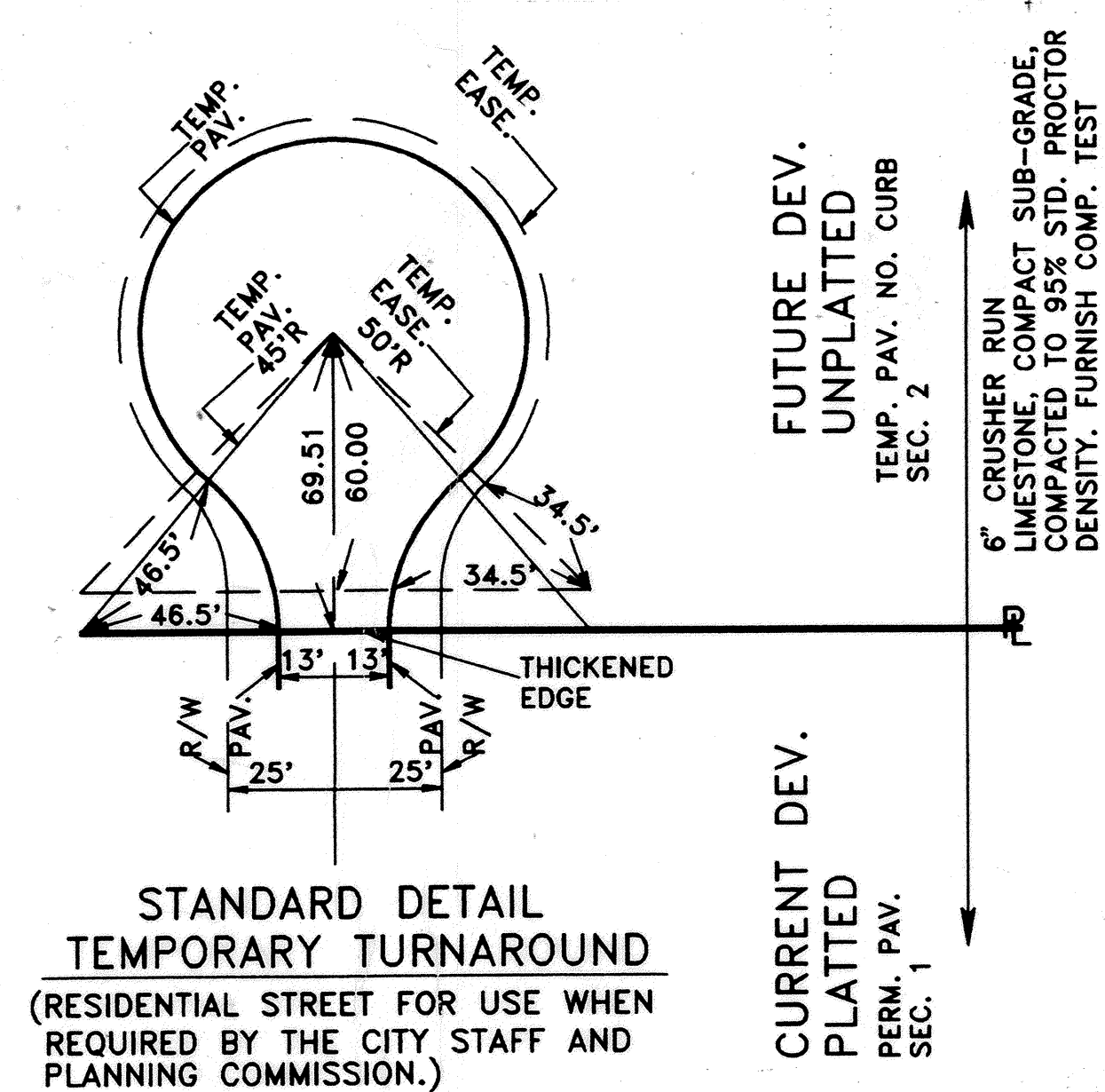


TYPICAL SECTION

TEMPORARY ASPHALT DRIVEWAY APPROACH

NOT FOR USE ON ANY STATE HWY.

APPROVED *Gene W. Sayers*
Gene W. Sayers
City Engineer



**STANDARD DETAIL
TEMPORARY TURNAROUND**
(RESIDENTIAL STREET FOR USE WHEN
REQUIRED BY THE CITY STAFF AND
PLANNING COMMISSION.)

FUTURE DEV.
UNPLATTED
TEMP. PAV. NO. CURB
SEC. 2

CURRENT DEV.
PLATTED
PERM. PAV.
SEC. 1

6" CRUSHER RUN
LIMESTONE, COMPACT SUB-GRADE,
COMPACTED TO 95% STD. PROCTOR
DENSITY. FURNISH COMP. TEST

3-15-01
7-12-06
2-12-06
2-16-04

Latest Revision: 1-29-93

BY: DESIGN ENGINEERS, INC.

ORDINANCE No. 291

DESIGN STANDARD DETAILS
CITY OF CHOCTAW OKLAHOMA
STANDARD PAVING SECTIONS
&
DETAILS

P-2